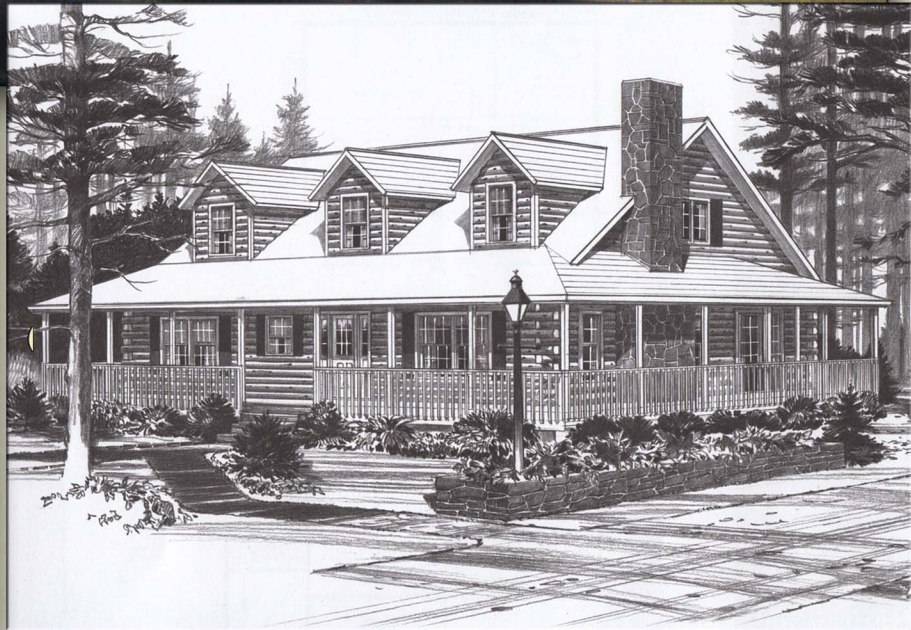




The Oakridge



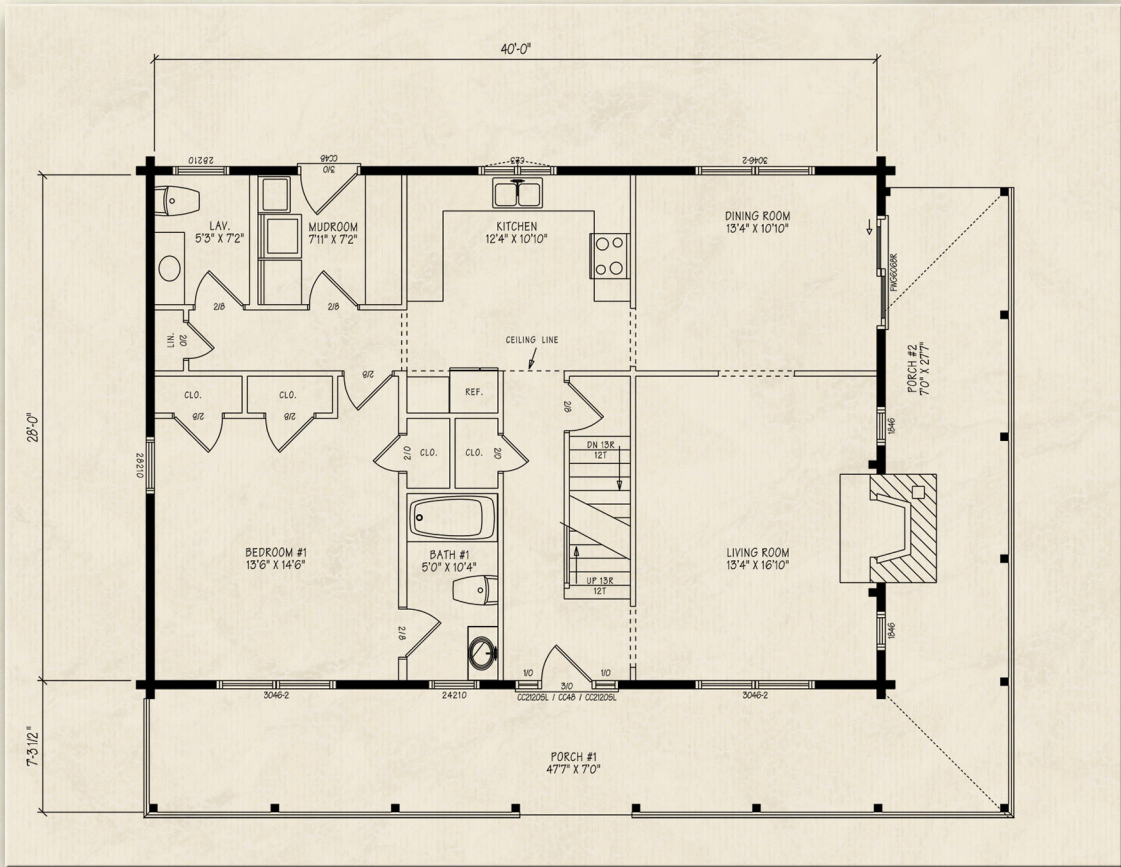
Northeastern Log Homes

info@northeasternlog.com 800-624-2797 www.northeasternlog.com

*Artist's rendering, photography and optional design ideas may vary from the standard model. Please always consult the standard floorplan and refer to the Premier Series material list as to what is included.



The Oakridge



Premier Home Series

28' x 40' Size

2,184 Square Feet

Three Bedrooms

Two and a Half Baths

Price information
available for download
on our website

Optional Design Ideas:

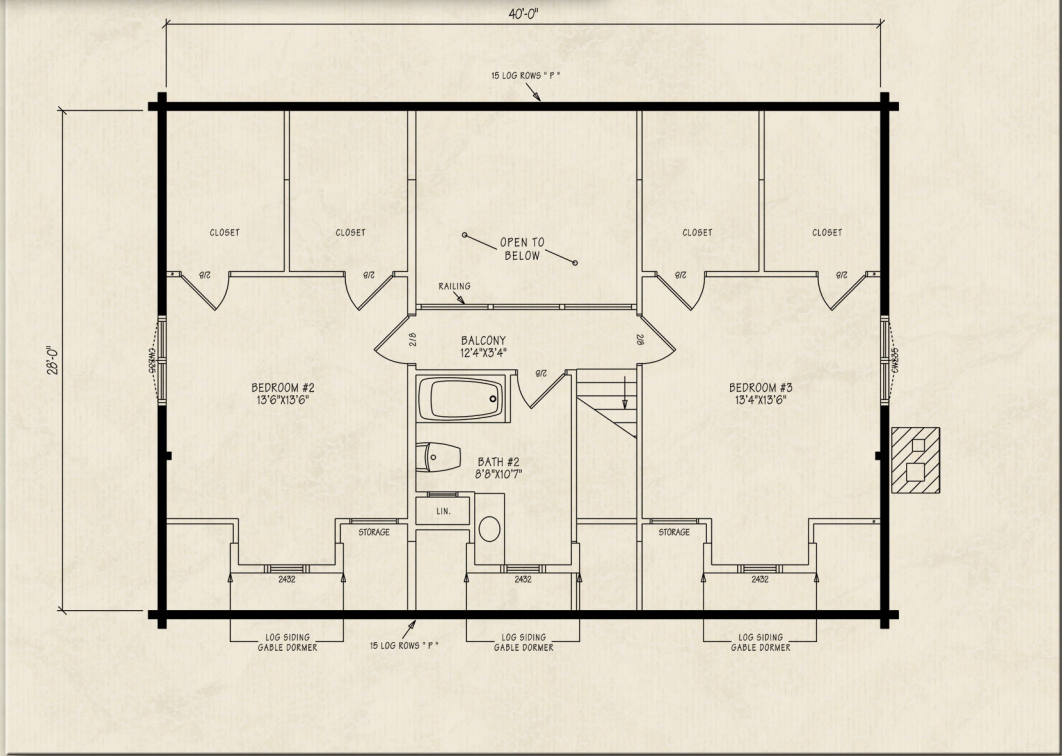
With built-in shelving, the right side of the laundry area can be utilized as a fantastic walk-in kitchen pantry

The double closets in the first floor master bedroom can be combined into a single large closet

Remove the frame wall to enlarge the area between the dining room and living room for a more open floorplan

Move the stove and remove the wall at the right of the kitchen to allow for a breakfast bar/peninsula design

Change the south (hallway) mudroom door to a pocket door. It can be left open for easy closet/pantry access, and pulled closed when the W/D is in operation



Northeastern Log Homes

info@northeasternlog.com 800-624-2797 www.northeasternlog.com

*Artist's rendering, photography & optional design ideas may vary from the standard model. Please always refer to the standard floorplan and consult the Premier Home Series Material List as to what is included. All plans, photography and images copyright NLH 2016

The Oakridge



The Oakridge

